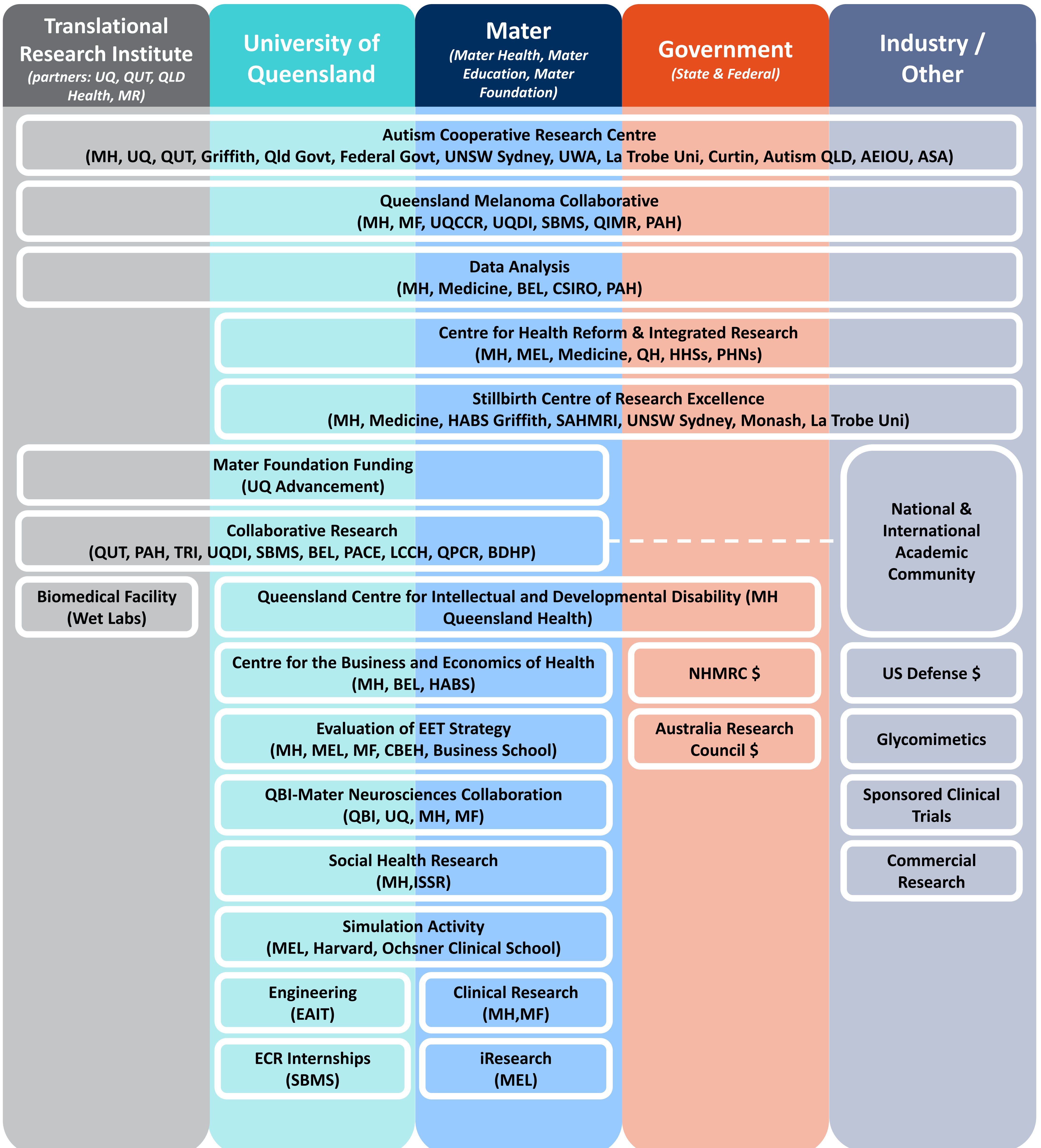


Mater Research Collaborations & Partnerships



Glossary of Terms

Acronym	Definition	Acronym	Definition
AEIOU	AEIOU Foundation for Children with Autism	MH	Mater Health
ARC	Australia Research Council	Monash	Monash University
Autism CRC	Autism Cooperative Research Centre	MR	Mater Research
Autism QLD	Autism Queensland	NHMRC	National Health and Medical Research Council
ASA	Autism Spectrum Australia	PACE	Pharmacy Australia Centre of Excellence
BDHP	Brisbane Diamantina Health Partners	PAH	Princess Alexandra Hospital
BEL	Faculty of Business, Economics and Law – University of Queensland	PHNs	Primary Health Networks
CBEH	Centre for the Business and Economics of Health – University of Queensland	QBI	Queensland Brain Institute
CRE	Centre for Research Excellence	QCIDD	Queensland Centre for Intellectual and Developmental Disability
CSIRO	Commonwealth Scientific and Industrial Research Organisation	QH	Queensland Health
Curtin	Curtin Health Innovation Research Institute	QIMR	QIMR Berghofer Medical Research Institute
EAIT	Faculty of Engineering, Architecture and Information Technology	QUT	Queensland University of Technology
EET Strategy	Exceptional Every Time Strategy	QPCR	Queensland Paediatric Cardiology Research Centre
Griffith	Griffith University	SAHMRI	South Australian Health and Medical Research Institute
HABS	Faculty of Health and Behavioural Sciences – University of Queensland	SBMS	School of Biomedical Science – University of Queensland
HHSs	Hospital and Health Services	TRI	Translational Research Institute
ISSR	Institute for Social Science Research	UNSW Sydney	The University of New South Wales Sydney
La Trobe	La Trobe University	UQ	University of Queensland
LCCH	Lady Cilento Children’s Hospital	UQCCR	UQ Centre for Clinical Research
MEL	Mater Education Ltd	UQDI	University of Queensland Diamantina Institute
Medicine	Faculty of Medicine – University of Queensland	US Defense	United States Department of Defense
MF	Mater Foundation	UWA	The University of Western Australia